

Recent WATIF projects have been on the farm and here's a quick tour. Starting at the entrance below. The farm is largely single story with occasional coom ceiling or 'room in roof', as are most of the local houses. A few hundred years ago a single level was adequate for quite large families. Windows were smaller, winters were colder and life was largely outdoor in day-time.



The first fully operational building

There's a new patio by James and several tables by Keith for the warmer weather. We have several very skilled staff and volunteers. The Main dining area, one of our smaller rooms is also currently used for meetings, activities, and talks. How the spaces will be used in the future will be decided as our needs become clearer, so flexibility is being built in.



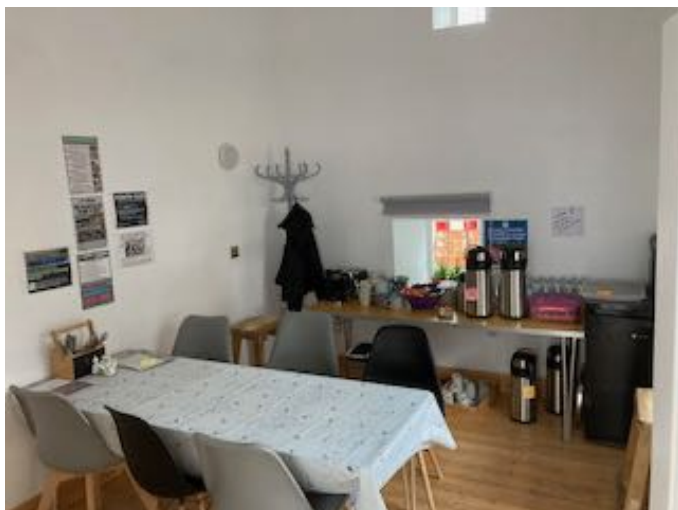
Patio



Current Cafe

There's a room below left currently being used for small meetings and volunteer meals, coffee, tea, etc. We can be a bit scruffy sometimes and this saves changing into smarter clothes or frightening visitors.

If we need a larger room we have the byre with convenient bays for tables, sales, art displays, presentation stalls and chats.



Current Cafe



The byre has an attached barn for larger indoor activities, bands, music, maybe festivals, celebrity weddings, political rallies etc but at the moment it's a barn. There are several buildings that are needing significant refurbishment and no doubt plans for their future functions will change.



One of the first parts, after making the core buildings functional, was the polytunnel below which got a new skin and some raised beds. It now has an automatic sprinkling system and a wood-chip floor. The produce is being used in the meals available in the main dining-room. Readers are invited to admire the doors which Jim fabricated and haven't fallen off yet.



The Cabin, below is intended for 'healthy' activities like Yoga, meditation and exercise requires more guttering, paint and weather protection. Mostly recycled, some parts of the structure are already in use but better disabled access is required. There are ramps and paths to most of the farm buildings and areas, but as it started as a working farm it will need more. Another coat of paint and some more guttering on the Cabin are on our 'to do' list.





The bees are doing whatever bees do in their beehives marked Bees. That's them in the distance along the wood-chip path above. I'll not annoy them with a close-up photo session.



There's a dutch barn above and various outbuildings in which we can store the reasonably robust tools for gardening and constructional purposes. Spades, forks, wheelbarrows etc as well as firewood and drainage pipes. Most of these areas are secure and have recording CCTV. The big 'Tractor shed' was to become the Men's shed, then a people's workshop, but is currently on hold as the roof lacks some qualities needed for those uses. An alternative is being sought while we think about it. The black and white picture is of Peggy the Flyer (Foal) on the farm pre WW1.



The farm project (Mid Oct 2024) is advancing nicely and we've picked up a mobile home at rather less cost than the port-a-cabin option, (Sandra the Static caravan) as an interim workshop that should be relatively easy to heat and should take several work-stations and benches. It has its own small sitting area and kitchen sink and can be moved to suit our needs. First stage will be stripping out and surplus furniture disposal, a bigger 'french window' entrance at the other end and disabled access. We still need a decent sized workshop, especially for bigger, dustier work but this will be a start and can be turned to other uses later.

